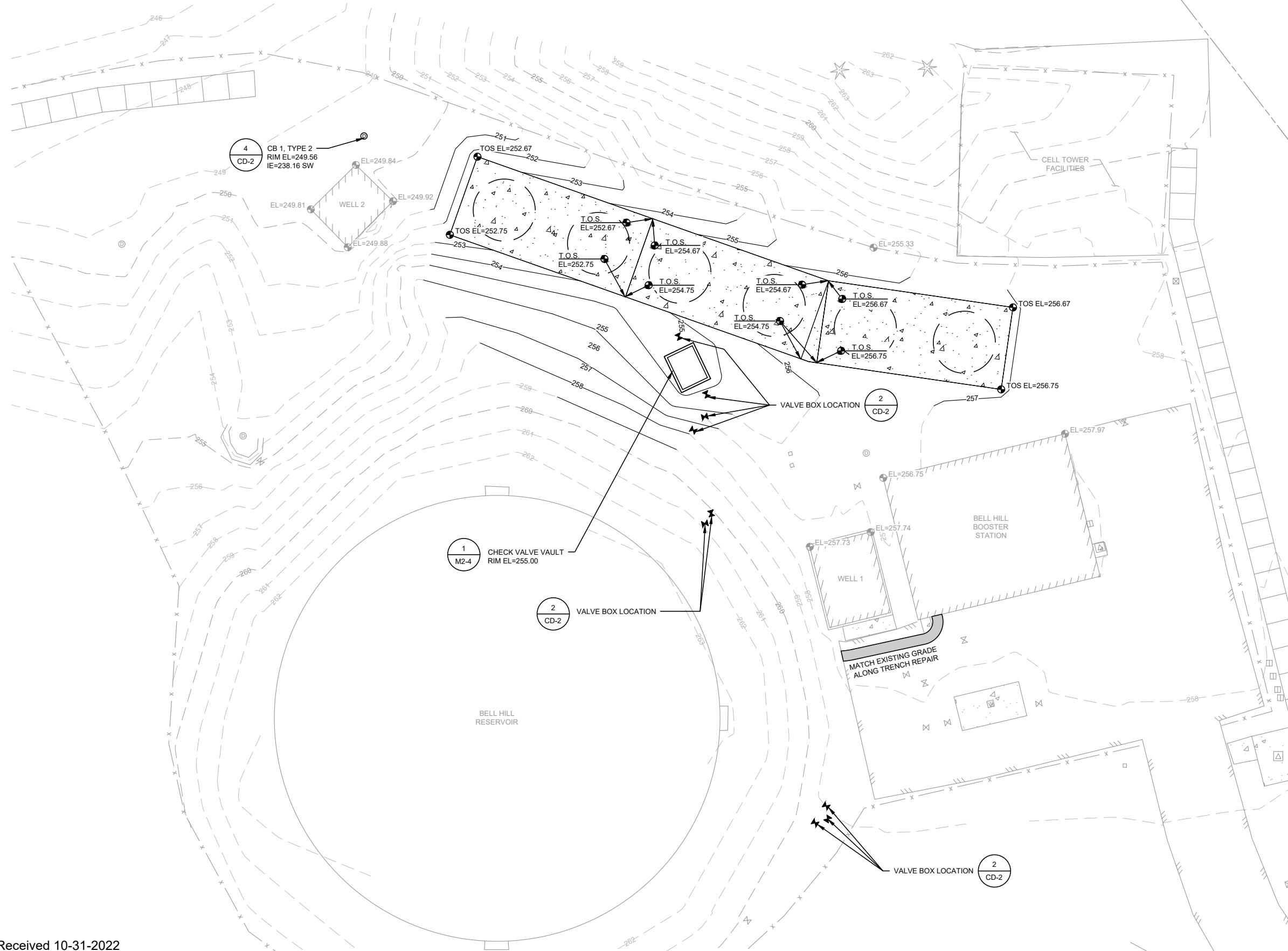
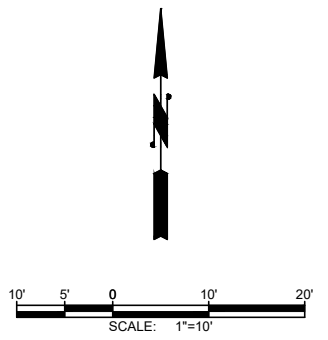


L:\DUPONT\21235 PFAS Treatment Design\PlanSet\Civil\02_GRADING.dwg, 4/29/2022 1:50 PM, JOHN BABB

Received 10-31-2022
City of DuPont



BELL HILL SITE GRADING PLAN
SCALE: 1"=10'



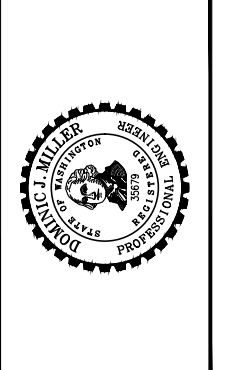
ESTIMATED EARTHWORK QUANTITIES	
CUT VOLUME	72.85 CY
FILL VOLUME	17.45 CY
NET CUT VOLUME	55.40 CY

- NOTES:**
- ALL INDICATED ELEVATIONS REFER TO THE FINISHED GRADE UNLESS OTHERWISE NOTED.
 - SLOPE FINISHED GROUND AWAY FROM ALL NON-DRAINAGE STRUCTURES AND TOWARDS DRAINS AT A 2% MINIMUM SLOPE.
 - ALL DISTURBED AREAS OUTSIDE OF THE HMA PAVING LIMITS SHOWN SHALL BE HYDROSEEDDED. SEE DETAIL 3 CD-3.
 - EROSION CONTROL MEASURES SHALL BE INSTALLED PRIOR TO BEGINNING CONSTRUCTION. SEE SHEET CD-3 FOR EROSION CONTROL REQUIREMENTS AND DETAILS.

Gray & Osborne, Inc.
CONSULTING ENGINEERS
2102 CARRIAGE DRIVE SW, BLDG. 1
OLYMPIA, WA 98502 • (360) 292-7481

DATE:	MAR 2022	TRG	JTB	DJM
DRAWN:				
CHECKED:				
APPROVED:				

PRELIMINARY NOT FOR CONSTRUCTION	DATE	APPD.
	REVISION	
No.		



CITY OF DUPONT
PIERCE COUNTY WASHINGTON
PFAS TREATMENT FACILITIES
BELL HILL SITE GRADING PLAN

SHEET:	C2-3
OF:	5
JOB NO.:	21235.00
DWG.:	C2_GRADING

0 1" 2"
TWO INCHES AT FULL SCALE.
IF NOT, SCALE ACCORDINGLY