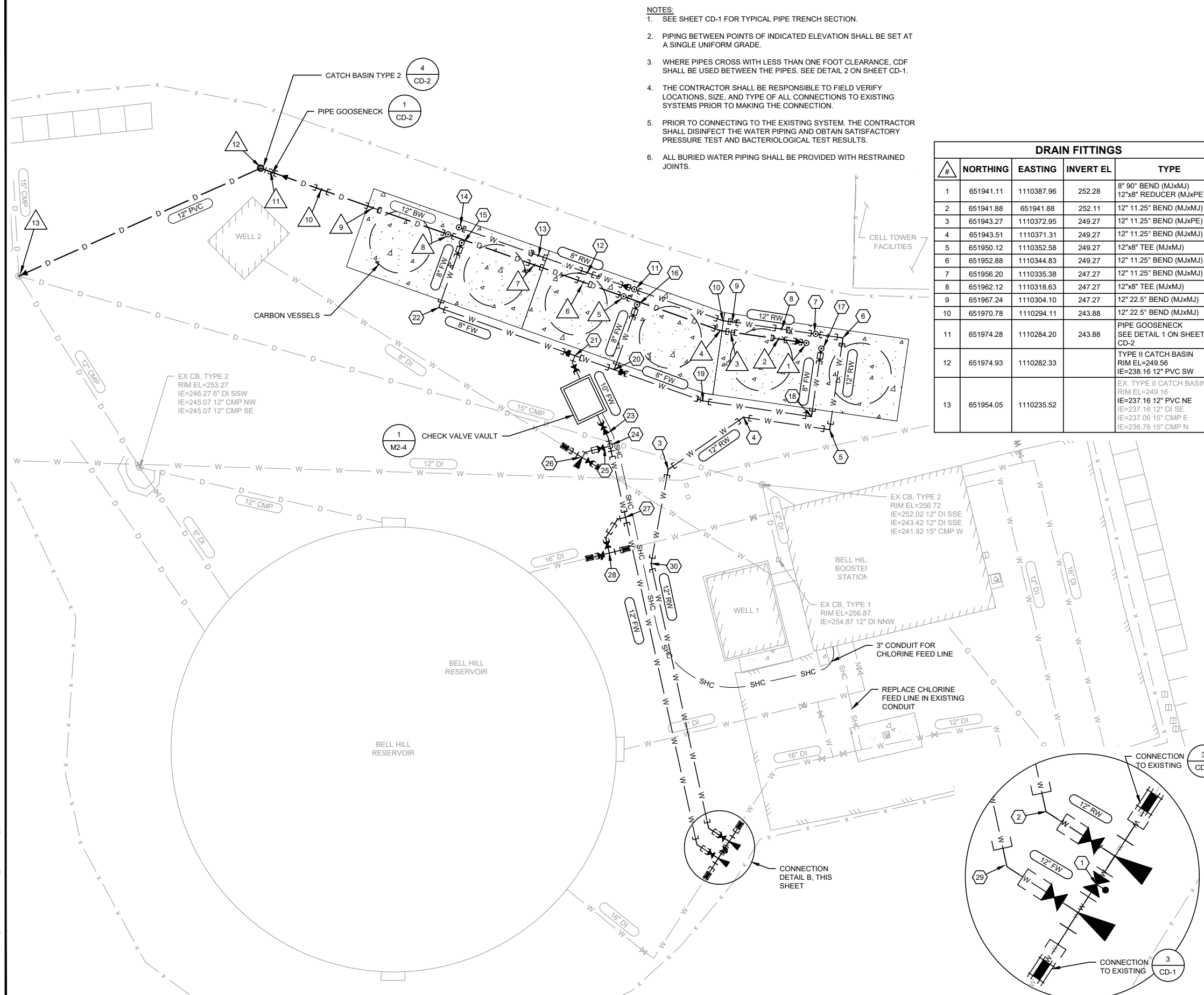
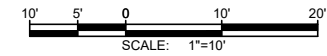
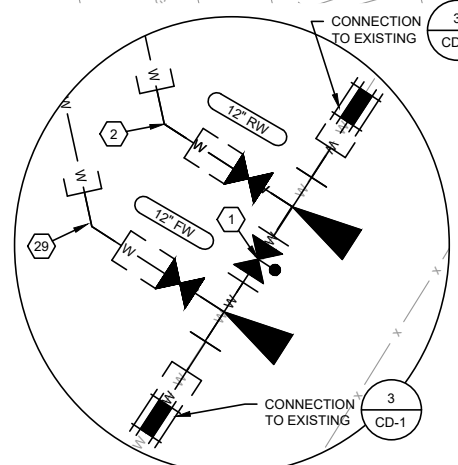


- NOTES:**
- SEE SHEET CD-1 FOR TYPICAL PIPE TRENCH SECTION.
 - PIPING BETWEEN POINTS OF INDICATED ELEVATION SHALL BE SET AT A SINGLE UNIFORM GRADE.
 - WHERE PIPES CROSS WITH LESS THAN ONE FOOT CLEARANCE, CDF SHALL BE USED BETWEEN THE PIPES. SEE DETAIL 2 ON SHEET CD-1.
 - THE CONTRACTOR SHALL BE RESPONSIBLE TO FIELD VERIFY LOCATIONS, SIZE, AND TYPE OF ALL CONNECTIONS TO EXISTING SYSTEMS PRIOR TO MAKING THE CONNECTION.
 - PRIOR TO CONNECTING TO THE EXISTING SYSTEM, THE CONTRACTOR SHALL DISINFECT THE WATER PIPING AND OBTAIN SATISFACTORY PRESSURE TEST AND BACTERIOLOGICAL TEST RESULTS.
 - ALL BURIED WATER PIPING SHALL BE PROVIDED WITH RESTRAINED JOINTS.



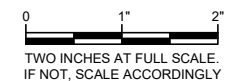
DRAIN FITTINGS				
#	NORTHING	EASTING	INVERT EL	TYPE
1	651941.11	1110387.96	252.28	8" 90° BEND (MJxMJ)
2	651941.88	651941.88	252.11	12"x8" REDUCER (MJxPE)
3	651943.27	1110372.95	249.27	12" 11.25° BEND (MJxMJ)
4	651943.51	1110371.31	249.27	12" 11.25° BEND (MJxMJ)
5	651950.12	1110352.58	249.27	12"x8" TEE (MJxMJ)
6	651952.88	1110344.83	249.27	12" 11.25° BEND (MJxMJ)
7	651956.20	1110335.38	247.27	12" 11.25° BEND (MJxMJ)
8	651962.12	1110318.63	247.27	12"x8" TEE (MJxMJ)
9	651967.24	1110304.10	247.27	12" 22.5° BEND (MJxMJ)
10	651970.78	1110294.11	243.88	12" 22.5° BEND (MJxMJ)
11	651974.28	1110284.20	243.88	PIPE GOOSENECK SEE DETAIL 1 ON SHEET CD-2
12	651974.93	1110282.33		TYPE II CATCH BASIN RIM EL=249.56 IE=238.16 12" PVC SW
13	651954.05	1110235.52		EX. TYPE II CATCH BASIN RIM EL=249.16 IE=237.16 12" DI SE IE=237.06 15" CMP E IE=236.76 15" CMP N

WATER FITTINGS				
#	NORTHING	EASTING	INVERT EL	TYPE
1	651842.98	1110371.96	251.00	16" BUTTERFLY VALVE (FLxFL) (NORMALLY CLOSED) 2 - 16"x12" TEE (FLxFL) W/ THRUST BLOCK 2 - 16" MJxFL ADAPTER 2 - 16" FLEXIBLE COUPLING
2	651847.20	1110369.03	251.17	12" 45° BEND (MJxMJ) 12" GATE VALVE (FLxMJ) (NORMALLY OPEN) 12" SPOOL (PExPE)
3	651916.62	1110361.22	249.27	12" 45° BEND (MJxMJ)
4	651926.73	1110375.78	249.27	12" 45° BEND (MJxMJ) (ROLLED)
5	651924.32	1110392.47	252.11	12" 90° BEND (MJxMJ) (ROLLED)
6	651942.09	1110395.03	252.11	12" 90° BEND (MJxMJ)
7	651942.85	1110389.73	252.11	12"x8" TEE (MJxMJ)
8	651943.81	1110383.09	252.11	12" 11.25° BEND (MJxMJ)
9	651945.22	1110373.31	249.27	12" 11.25° BEND (MJxMJ)
10	651945.44	1110371.77	249.27	12" 11.25° BEND (MJxMJ)
11	651951.48	1110354.65	249.27	12"x8" TEE (MJxMJ) 12"x8" REDUCER (PExMJ)
12	651954.74	1110345.48	249.44	8" 11.25° BEND (MJxMJ)
13	651958.06	1110336.04	247.44	8" 11.25° BEND (MJxMJ)
14	651963.48	1110320.70	247.44	8" 90° BEND (MJxMJ)
15	651960.49	1110321.24	247.44	2 - 8" 45° BEND (MJxMJ)
16	651948.49	1110355.18	249.44	2 - 8" 45° BEND (MJxMJ)
17	651940.02	1110390.84	252.28	2 - 8" 45° BEND (MJxMJ)
18	651926.86	1110388.95	252.28	8" 90° BEND (MJxMJ)
19	651929.88	1110367.96	249.44	8" 11.25° BEND (MJxMJ)
20	651935.96	1110350.75	249.35	10"x8" TEE (MJxMJ) 10"x8" REDUCER (PExMJ)
21	651938.64	1110343.15	249.35	10" TEE (MJxMJxFL) 10"x8" REDUCER (PExMJ) 10" 45° BEND (FLxFL) 10" GATE VALVE (FLxMJ) (NORMALLY OPEN)
22	651947.95	1110316.81	247.44	8" 90° BEND (MJxMJ) (ROLLED)
23	651923.56	1110349.22	249.35	10" GATE VALVE (MJxFL) (NORMALLY OPEN) 12"x10" REDUCER (FLxFL) 12" 11.25° BEND (FLxFL)
24	651921.14	1110349.89	249.27	12"x8" TEE (FLxFL) 12" MJxFL ADAPTER
25	651920.85	1110348.67	252.09	8" 90° BEND (FLxFL) 8" GATE VALVE (FLxMJ) (NORMALLY CLOSED)
26	651918.93	1110344.57	252.09	8" TEE (FLxFL) W/ THRUST BLOCK 8" MJxFL ADAPTER 8" GATE VALVE (FLxMJ) (NORMALLY OPEN) 8" 45° BEND (FLxMJ) 2 - 8" FLEXIBLE COUPLING
27	651907.34	1110352.96	249.27	12" TEE (MJxMJxFL) 12" 45° BEND (FLxMJ) (ROLLED)
28	651900.47	1110349.82	247.23	16"x12" TEE (FLxFL) 16" BUTTERFLY VALVE (MJxFL) (NORMALLY OPEN) 16" MJxFL ADAPTER 12" GATE VALVE (FLxMJ) (NORMALLY CLOSED) 12" 45° BEND (FLxMJ) (ROLLED) 2 - 16" FLEXIBLE COUPLING
29	651844.00	1110366.77	251.17	12" 45° BEND (MJxMJ) 12" GATE VALVE (FLxMJ) (NORMALLY OPEN) 12" SPOOL (PExPE)
30	651898.40	1110357.90	249.27	12" 22.5° BEND (MJxMJ)



BELL HILL SITE PIPING PLAN
SCALE: 1"=10'

CONNECTION DETAIL B
NOT TO SCALE



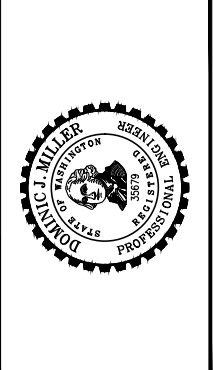
L:\DUPONT\21235 PFAS Treatment Design\Planet\Civil\C2_PIPING.dwg, 4/29/2022 1:51 PM, JOHN BABB

Received 10-31-2022
City of DuPont

Gray & Osborne, Inc.
CONSULTING ENGINEERS
2102 CARRIAGE DRIVE SW, BLDG. 1
OLYMPIA, WA 98502 • (360) 292-7481

DATE:	MAR 2022	TRG	JTB	DJM
DRAWN:				
CHECKED:				
APPROVED:				

PRELIMINARY NOT FOR CONSTRUCTION	DATE	APPD
	REVISION	
No.		



CITY OF DUPONT
PIERCE COUNTY WASHINGTON
PFAS TREATMENT FACILITIES
BELL HILL SITE PIPING PLAN

SHEET:	C2-2
OF:	5
JOB NO.:	21235.00
DWG:	C2_PIPING